



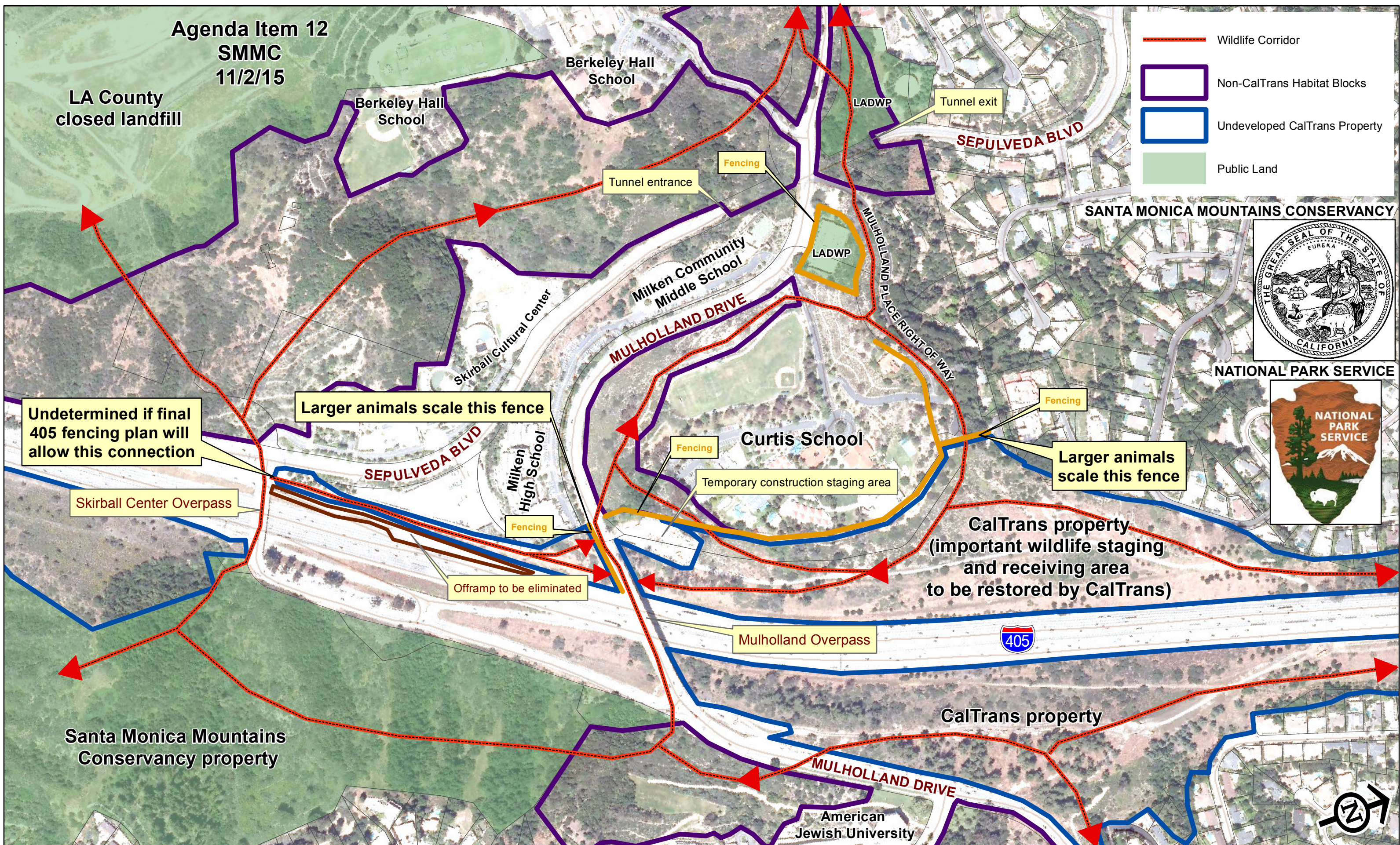


Agenda Item 12
SMMC
11/2/15

LA County
closed landfill

-  Wildlife Corridor
-  Non-CalTrans Habitat Blocks
-  Undeveloped CalTrans Property
-  Public Land



Undetermined if final
405 fencing plan will
allow this connection

Larger animals scale this fence

Larger animals
scale this fence

CalTrans property
(important wildlife staging
and receiving area
to be restored by CalTrans)

Offramp to be eliminated

Skirball Center Overpass

Temporary construction staging area

Santa Monica Mountains
Conservancy property

CalTrans property

Existing and Potential Wildlife Corridor/Habitat Linkages at
Mulholland Drive and Skirball Center Drive 405 Freeway Over Crossings

